



UNIMORE

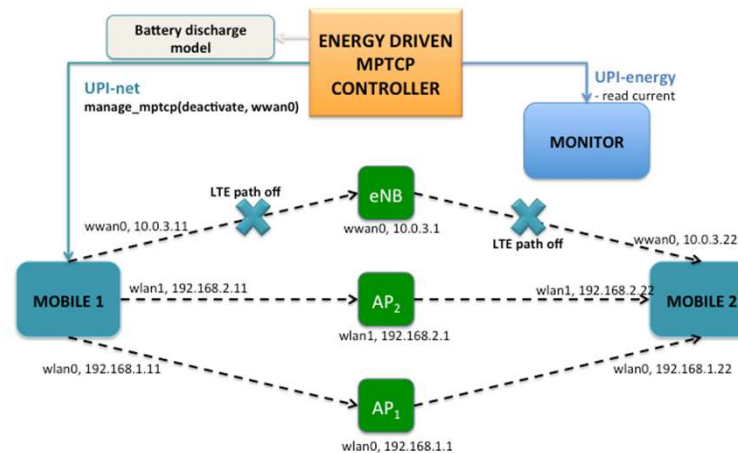
UNIVERSITÀ DEGLI STUDI DI
MODENA E REGGIO EMILIA

Dynamic, Energy-AwaRe PaTh Selection in Hybrid Wireless SeTtings DART-HIT

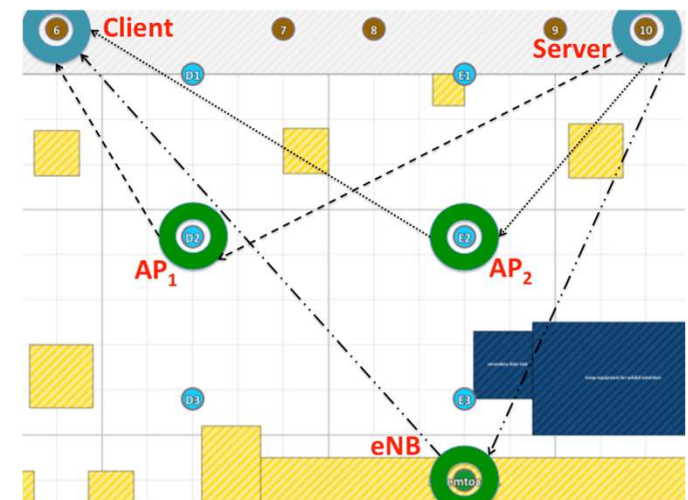
Experiments with

- Huawei E-398u-1
LTE dongles
- 802.11a and
802.11g wireless
nodes

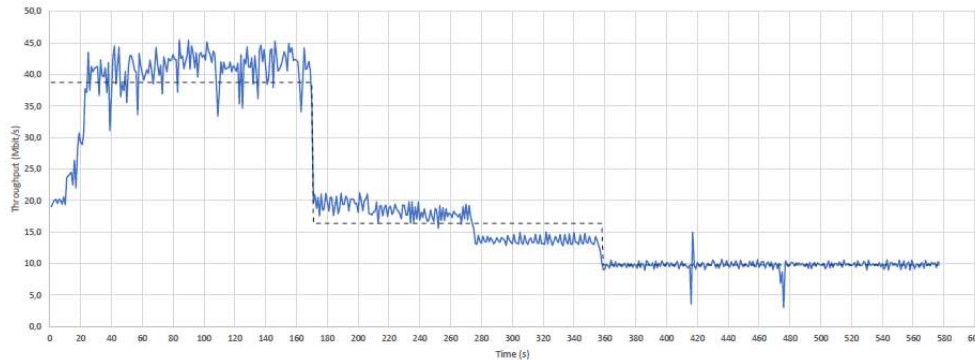
The examined setup



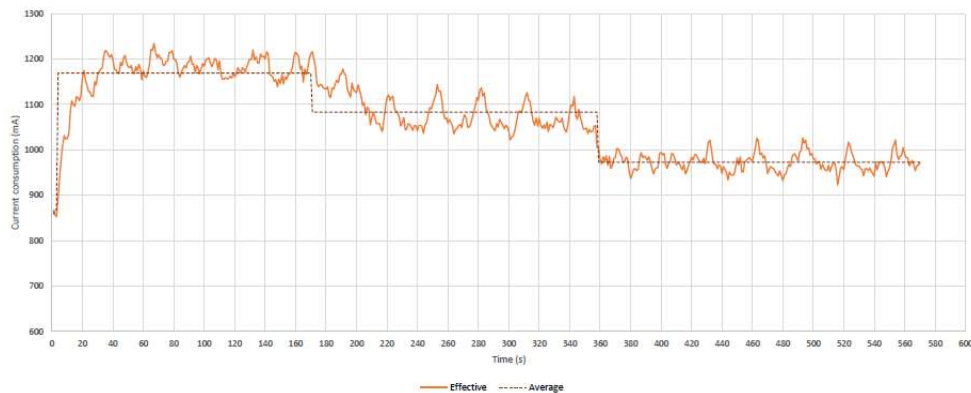
Testbed layout



Energy-Aware Multi-Path TCP



Energy-aware MPTCP throughput



Current consumption on the wireless destination node

A newly developed WiSHFUL controller

- orchestrates consumption readings
- dynamically detaches the LTE connection first
- 802.11a next

Lesson learnt

- MPTCP behavior can be effectively tailored so as to achieve a compromise between throughput and battery life of wireless nodes